

2017

Presentation 2017

LTI, Logistics and Integrated Transport, Lda.



Company

LTI - Logistics and Integrated Transport, Lda. Integrated on MPCP Group. - Management, Investments, Consulting & Business Promotion Ltd, is a company under Angolan law, and was founded in 2008 to meet the challenges that Confronted the ESA -. Engineering services Angola, Lda, (Associate Company of Construction and Civil, Public Works), in the transport area of materials, in freight forwarding activities (import materials, equipment and goods for construction), and direction of transport, reception and circulation of goods and merchandise.

At present, the company is dedicated to integrated logistics, transportation and equipment rental processes, which can be combined or decoupled, providing the possibility to find the best solutions for this purpose, according to the needs of each client.

To meet this wide range of services, the company has a structure that guarantees the process from customs clearance to door to door delivery.

Strategically, in order to better serve the market, in addition to investing in geographic location in two key regions of the country (Luanda and Lobito), the company constantly seeks to invest in expanding the necessary resources (human and material) to cover the needs and Challenges it faces, in a competitive and sustainable way.

Mission;

Develop, deploy and manage technical solutions for transportation and logistics according to the needs of each client.

Vision;

To be recognized in the market as the BEST operator of logistics, equipment rental, transport and distribution in the country.

Values;

Qualification and valorization of the Human Being.

Commitment of the team and active participation of all in the pursuit of the client's full satisfaction
Transparency to Employees.

Suppliers and Clients.

Innovation and Pioneering.

A LTI, offers a wide range of pioneering products and services in its field of activity.

Services

To fulfill all its responsibilities, LTI, in addition to the means of support, has a large fleet of trucks of the Volvo, MAN, Renault and Mercedes brands. It also has trailers (with and without tappets), dry and cold containers (20 and 40 feet) and silos, for the transport of all types of goods (containerized and / or bulk). For inert transport, it has tipper trucks and tipper trailers, with load capacities up to 35m3.

Logistics, present engineering services and logistics intelligence on a national scale, appropriate and formatted to the needs of each client.

Road Transport, we have more than 500 heavy transport vehicles. Own park. We transport all types of containerized cargo and bulk (Dry or cold).

Rental Equipment, We have a full range of handling and transport equipment for short and long term rentals.

Special Transport, we carry loads of great dimensions, weight and height. We think, solve and execute any single freight transport up to 1030 tons. It complements the fleet with a set of extensible trailers (up to 26m), machine carriers and modular trailers with load capacity up to 1,030 tons. ,

Most of the power transformers were handled and transported by LTI to Soyo, Ambriz, Kapari and N'zeto, under the works of Odebrecht. A total of 5 transformers weighing between 160 and 190 tons each, with discharge at the end point, are used specific methods and techniques only within the reach of specialized teams and technicians.

Air Transport, we have laid the foundations for the optimization of air transport by ensuring a high quality in our global connections (all types of cargo and airfreight).

International Transport, we carry out any transportation service from and out of the country.

Stowage, we offer complete services to the client, in any point of the country, through our specialized teams.

Storage and distribution, we offer complete services to the client, in any point of the country, through our specialized teams.

Guarantee the offer of services throughout the country, through our 1.8 million m2 of Porto Seco and 30,000 m2 of covered warehouses.

At the level of operational support, the company has;

In addition to representatives and means in all the provinces of the country, LTI has a team of elements with extensive experience on the ground that ensures the streamlining of ongoing processes, both at the port terminals (sea or air), as well as at the destination Of goods in which cargo handling support is required;

A set of load handling devices (suitable for a wide range of goods) such as cranes, forklifts, side loaders, reach stackers, multifunction, ...

Security and monitoring;

In order to face the possible technical and human constraints inherent to the daily operation of vehicles and equipment (24h / day, 365 days / year), and in order to ensure their useful life, LTI has with experienced and qualified personnel, who ensures the preventive and corrective maintenance according to the standards of the marks.

The workshop is equipped with all the necessary equipment and materials to guarantee the technical assistance to all its means, throughout the national territory, 24 hours a day, 365 days a year.

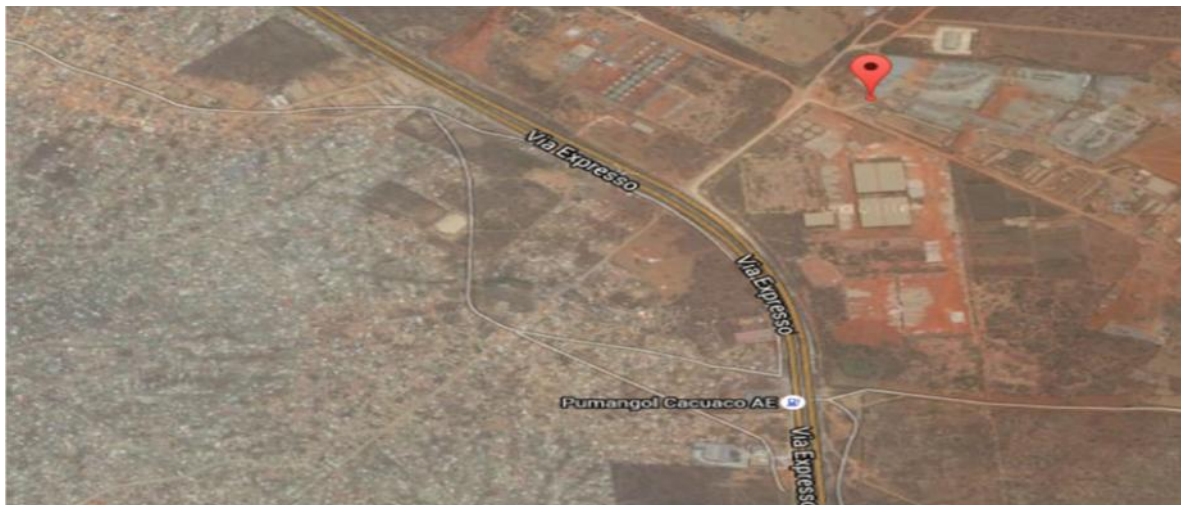
To ensure the safety of its operations (both provincial and inter-provincial), all trucks are equipped with a GPS system, and are monitored 24 hours a day through satellite information provided in real time by the GPS Monitoring Center team.

Location;

The main operational base is located in Luanda, on the Benfica / Cacuo Expressway, strategic point of privileged access to all routes:

- Luanda port;
- Dry port of Panguila;
- Dry port of Viana;
- Provinces.

It has, both in Luanda and in Lobito, its own dry port, ensuring, in case of need of the customer, and by prior agreement, the reception and custody of its merchandise for later delivery. This possibility aims to reduce possible high port costs for the customer.



Strategically, in order to better serve the market, in addition to investing in geographic location in two key regions of the country (Luanda and Lobito), the company constantly seeks to invest in expanding the necessary resources (human and material) to cover the needs and Challenges it faces, in a competitive and sustainable way.

Customers;

Since its inception in 2008, the company has been consolidating its position in the market, and because of investments made for tight control of the entire operation, it has been preference of customers such as:

<ul style="list-style-type: none"> • Agrícola; • AMT; • Biocom; • Fábrica de Cimento do Kwanza Sul; • Kora Angola • Krones Angola; • Odebrecht; • Ofek; • Petroserv; • Sonip; • Refriango; • Mantigo; • Min. Administração do Território; 	<ul style="list-style-type: none"> • Ministério da Educação; • Soportos; • Ministério da Indústria; • SERCOTEC; • OREY; • NECOTRANS; • GRUPO ZAHARA; • BOLLORÉ • KUEHNE NAGEL ANGOLA • (...)
--	--

LTI participated in major projects:

- The Logistics and Transportation of Materials and Equipment for Updating the Electoral Register;
- Distribution of school books, materials and furniture; (Still running)
- Transport and logistics of construction materials for the Kora Housing Project; (Still running)
- Rehabilitation of the Luanda / Malange Railroad;
- Construction of social housing "Zango Project" (I, II, III, IV and V);
- Construction of the New Centralities of Dundo, Kilamba and Cacuaco;
- Logistics and Transport Operations for the 2012 General Election;
- General Population and Housing Census of Angola 2014

For better interaction, a visit to our facilities is welcome.

We Raise Logistics to Another Level ...

Photo gallery:









Innovation;

LTI offers a wide range of products, services and pioneering solutions that guarantee the efficiency in its area of operation.

We strive to reach the top of operational efficiency.

Let's move...

